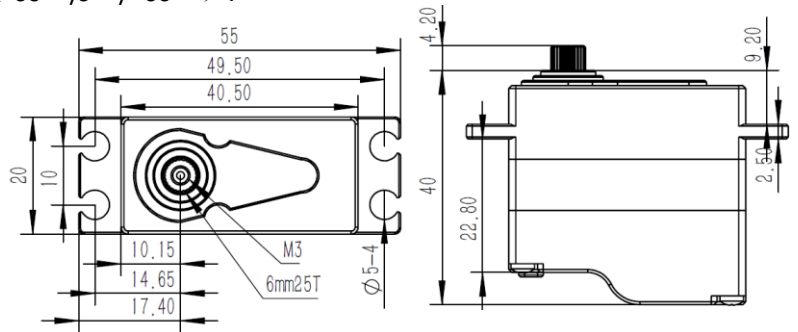
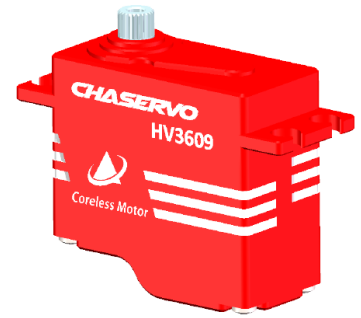
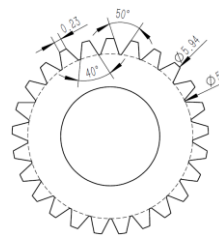


HV3609 Technical Specification


1. Specification

- Operating Voltage: DC7.4V.
- Operating Voltage Range: DC4.8V-8.4V.
- Working Frequency: 1520us/333Hz.
- Pulse Lengths: 900us-2100us.
- Default Travel Angle: $\pm 50^\circ = 100^\circ$ total travel/1000us-2000us.
- Max. Travel Angle: $\pm 60^\circ = 120^\circ$ total travel/900us-2100us.
- Signal Voltage: HIGH: min.3.3V, max.5.0V / Low: min.0.0V, max.1.5V.
- Pulse Lengths for Position: 900us/1500us/2100us (-60° / 0° / $+60^\circ$) .
- Operating Temperature Range: $-10^\circ\text{C} \dots +65^\circ\text{C}$.
- Dimensions: 40.5*20*40mm ± 0.2 mm.
- Weight: 70g $\pm 10\%$.
- Case Material: Aluminum Alloy.
- Motor Type: Coreless DC Motor.
- Gear Set Material: Hardened Steel.
- Position Sensor: Potentiometer.
- Ball Bearing: 2BB.



Voltage	Holding Torque	Output Torque	No-load Speed	Stalling Current
4.8V	24.0Kgf.cm	16.0Kgf.cm	0.13sec/60°	4.00A
6.0V	30.0Kgf.cm	20.0Kgf.cm	0.11sec/60°	4.15A
7.4V	36.0Kgf.cm	24.0Kgf.cm	0.09sec/60°	4.95A
8.4V	40.0Kgf.cm	27.0Kgf.cm	0.08sec/60°	5.85A

2. Electrical Connection

 3 2 1	Pin Assignment			
	1	Orange	Signal	PWM Command
	2	Red	DC+	Supply Voltage
	3	Brown	DC-	Supply Ground

3. Performance

